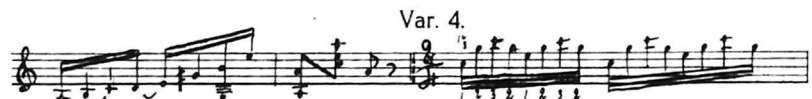
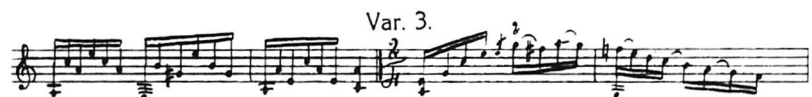
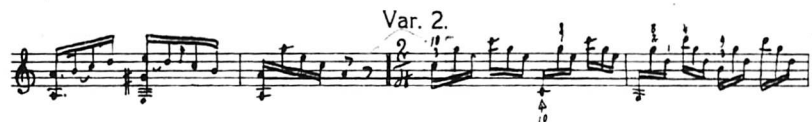
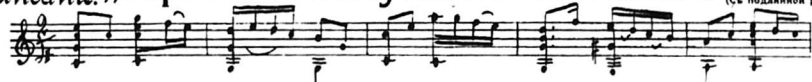


Вариации на русскую пѣсню

Andante. „При долинушкѣ стояла“ Д. О. Сихры. (Съ подлинной рукописи).



L-1182



Var. 5.



Var. 6.



Вальсъ-Романсъ.

48

Tempo di valce.

Муз. М. Сидорукъ.

The first musical staff is in 3/4 time with a key signature of one sharp (F#). It begins with a treble clef and a forte dynamic marking. The melody consists of eighth and quarter notes, with some rests.

The second musical staff is labeled "Walse." and features a treble clef. It contains a series of chords and some melodic fragments, with a dynamic marking of *f*.

The third musical staff continues the piece with a treble clef and a series of chords, some with a dynamic marking of *f*.

The fourth musical staff features a treble clef and a melody with eighth notes, accompanied by chords. A dynamic marking of *f* is present.

The fifth musical staff continues with a treble clef and a melody of eighth notes, with chords and a dynamic marking of *f*.

The sixth musical staff features a treble clef and a melody with dotted rhythms, accompanied by chords. A dynamic marking of *f* is present.

The seventh musical staff continues with a treble clef and a melody of eighth notes, with chords and a dynamic marking of *f*.

The eighth musical staff features a treble clef and a melody with eighth notes, with chords and a dynamic marking of *f*.

The ninth musical staff continues with a treble clef and a melody with eighth notes, with chords and a dynamic marking of *f*.

Handwritten musical notation on a single staff. It begins with a treble clef and a key signature of one sharp (F#). The notation includes various rhythmic values and dynamic markings such as *f* and *mf*. There are some handwritten annotations above the staff, possibly "1234" and "234".

Handwritten musical notation on a single staff, continuing the piece. It features a mix of rhythmic patterns and dynamic markings like *f* and *ff*.

Handwritten musical notation on a single staff. It includes a second ending bracket marked with a "2" and a repeat sign. Dynamic markings include *p* and *f*.

Handwritten musical notation on a single staff. It contains various rhythmic figures and dynamic markings such as *f* and *mf*.

Handwritten musical notation on a single staff. It features a melodic line with dynamic markings like *mf* and *p*.

Handwritten musical notation on a single staff. It includes a complex rhythmic passage with dynamic markings like *f* and *mf*. There are some handwritten notes at the end of the staff, possibly "D.C. al. f".

Handwritten musical notation on a single staff. It begins with the word "Coda." and a key signature change to one sharp. It includes dynamic markings like *f* and *mf*.

Handwritten musical notation on a single staff. It consists of a series of chords with dynamic markings like *f* and *mf*.

Handwritten musical notation on a single staff. It features a series of chords with dynamic markings like *f* and *mf*. The word "rit" is written below the staff.

Handwritten musical notation on a single staff. It includes a series of chords with dynamic markings like *f* and *mf*. The word "rit" is written below the staff.